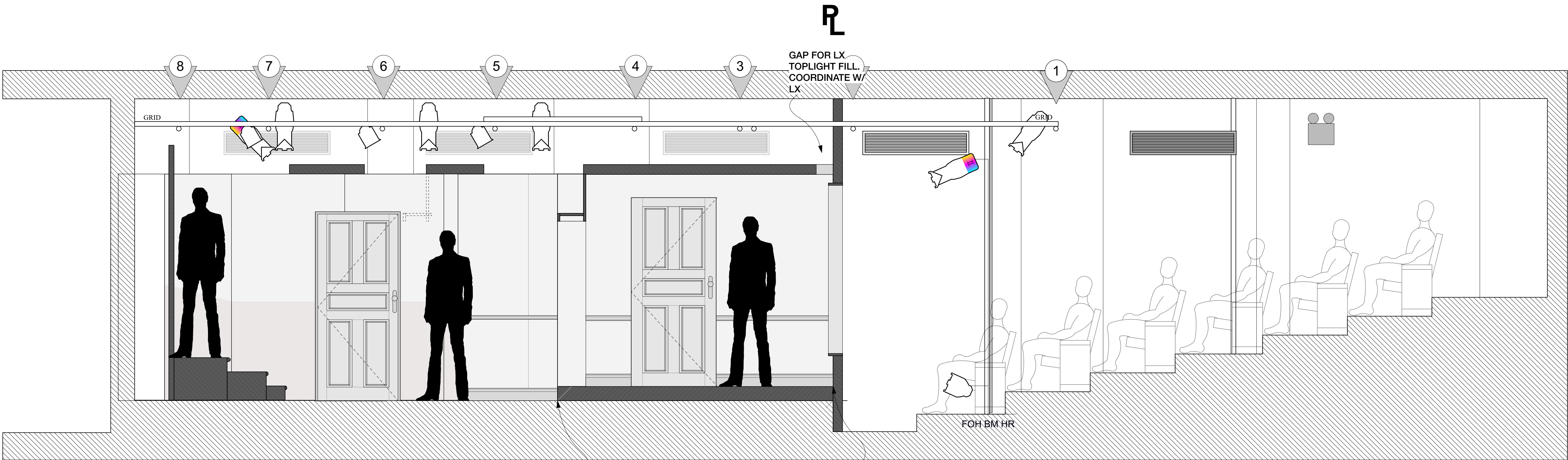


01
OF 11



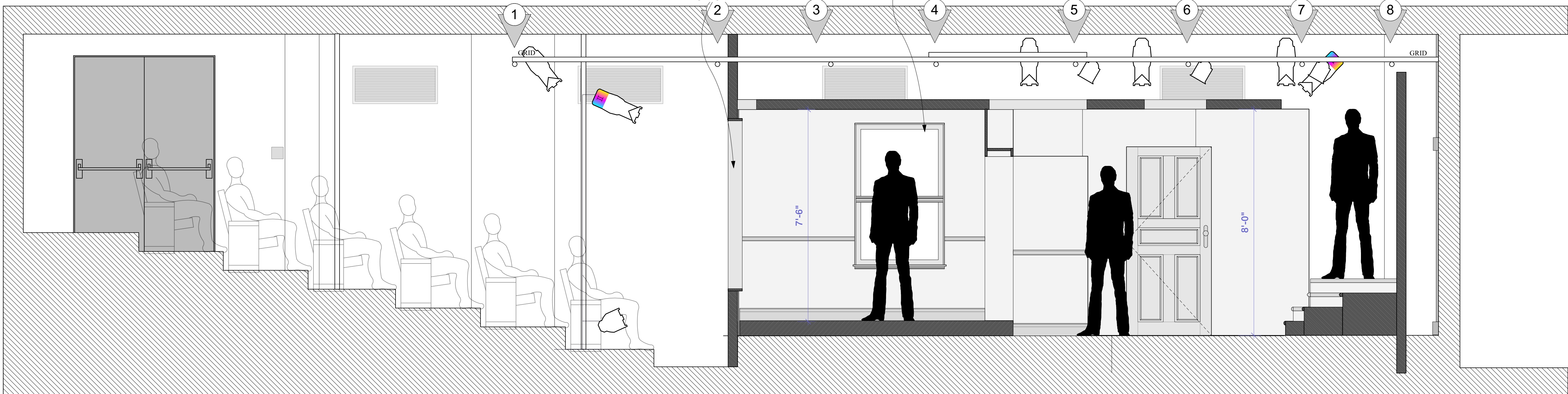
STAGE LEFT CENTER LINE SECTION
Scale: 1/2" = 1'-0"

DISCUSS POSSIBILITY OF
OPEN-BACK OR HOLE ON
BACK OF PLATFORM FOR
LX TO TUCK BIRDIES FOR
FOOTLIGHT SUPPORT

SPACE FOR LX TO
INSTALL SMALL
FOOTLIGHTS.

GLASS IS THIN PLEXI.
DIRTY ENOUGH TO FUNCTION
AS FOGGED.
DISCUSS SHUBERT WALL
TREATMENT B/W PAINT AND LX

PROSC. REVEALS ARE
TREATED TO MATCH
FRONT OF PROSC. UNIT.
REFER TO MODEL



STAGE RIGHT CENTER LINE SECTION
Scale: 1/2" = 1'-0"

DISCLAIMER
THIS DRAWING REPRESENTS VISUAL
CONCEPTS AND SUGGESTIONS FOR
CONSTRUCTION ONLY. THE
DESIGNER IS UNQUALIFIED TO
DETERMINE THE
ELECTRICAL OR STRUCTURAL
APPROPRIATENESS OF THIS
DESIGN
AND WILL NOT ASSUME
RESPONSIBILITY
FOR IMPROPER ENGINEERING,
CONSTRUCTION, OR USE.

REVISIONS		
#	REVISION	DATE
4		
3		
2	FINAL	10.3.22
1	PRELIMINARY	9.21.22

NOTES

THE SHADOW OF A GUNMAN

WRITTEN BY:
SEAN O'CASEY

DIRECTED BY:
IAN BELKNAP

SCENIC DESIGN BY:
JOSH OBERLANDER

TECHNICAL DIRECTOR:
JON ALLAIRE

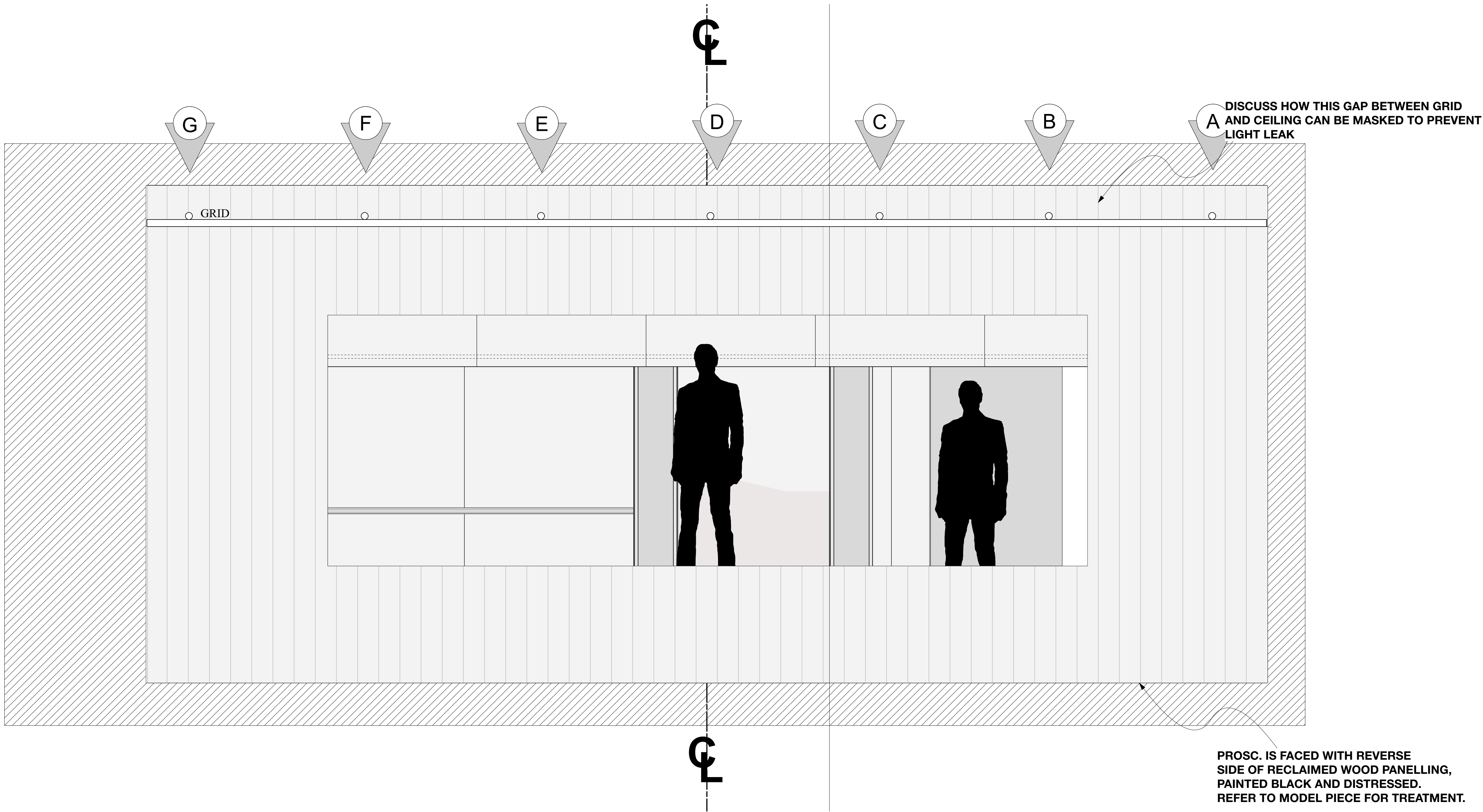
TISCH THIRD YEAR
PRODUCTION
SHUBERT THEATER
721 BROADWAY, NEW YORK, NY

CL SECTIONS

DATE: 3 OCTOBER 2022

SCALE: 1/2" = 1'-0"

PLATE NO.
02
OF 11



DISCLAIMER
THIS DRAWING REPRESENTS VISUAL CONCEPTS AND SUGGESTIONS FOR CONSTRUCTION ONLY. THE DESIGNER IS UNQUALIFIED TO DETERMINE THE ELECTRICAL OR STRUCTURAL APPROPRIATENESS OF THIS DESIGN AND WILL NOT ASSUME RESPONSIBILITY FOR IMPROPER ENGINEERING, CONSTRUCTION, OR USE.

REVISIONS		
#	REVISION	DATE
4		
3		
2	FINAL	10.3.22
1	PRELIMINARY	9.21.22

NOTES

THE SHADOW OF A GUNMAN

WRITTEN BY: ^{ZK} SEAN O'CASEY
DIRECTED BY: IAN BELKNAP

SCENIC DESIGN BY: JOSH OBERLANDER

TECHNICAL DIRECTOR: JON ALLAIRE

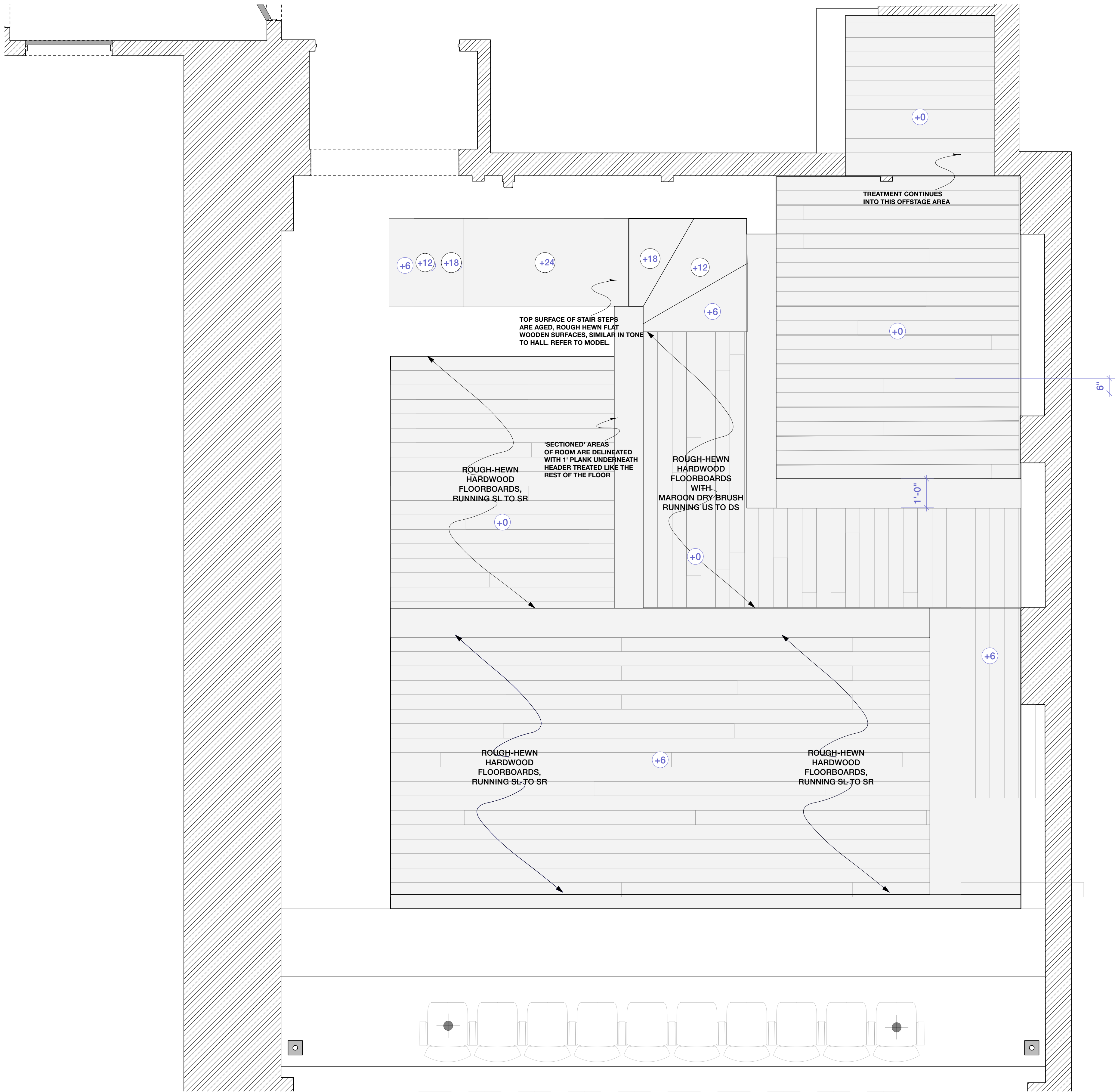
TISCH THIRD YEAR PRODUCTION
SHUBERT THEATER
721 BROADWAY, NEW YORK, NY

COMPOSITE FRONT ELEVATION

DATE: 3 OCTOBER 2022

SCALE: 1/2" = 1'-0"

PLATE NO.
03
OF 11



HARDWOOD FLOOR - TONE AND TEXTURE REF.
NOT TO SCALE



WOODEN STAIRCASE - TONE AND TEXTURE REF.
NOT TO SCALE

DISCLAIMER
THIS DRAWING REPRESENTS VISUAL CONCEPTS AND SUGGESTIONS FOR CONSTRUCTION ONLY. THE DESIGNER IS UNQUALIFIED TO DETERMINE THE ELECTRICAL OR STRUCTURAL APPROPRIATENESS OF THIS DESIGN AND WILL NOT ASSUME RESPONSIBILITY FOR IMPROPER ENGINEERING, CONSTRUCTION, OR USE.

REVISIONS		
#	REVISION	DATE
4		
3		
2	FINAL	10.3.22
1	PRELIMINARY	9.21.22

NOTES

THE SHADOW
OF A GUNMAN

WRITTEN BY:
SEAN O'CASEY

DIRECTED BY:
IAN BELKNAP

SCENIC DESIGN BY:
JOSH OBERLANDER

TECHNICAL DIRECTOR:
JON ALLAIRE

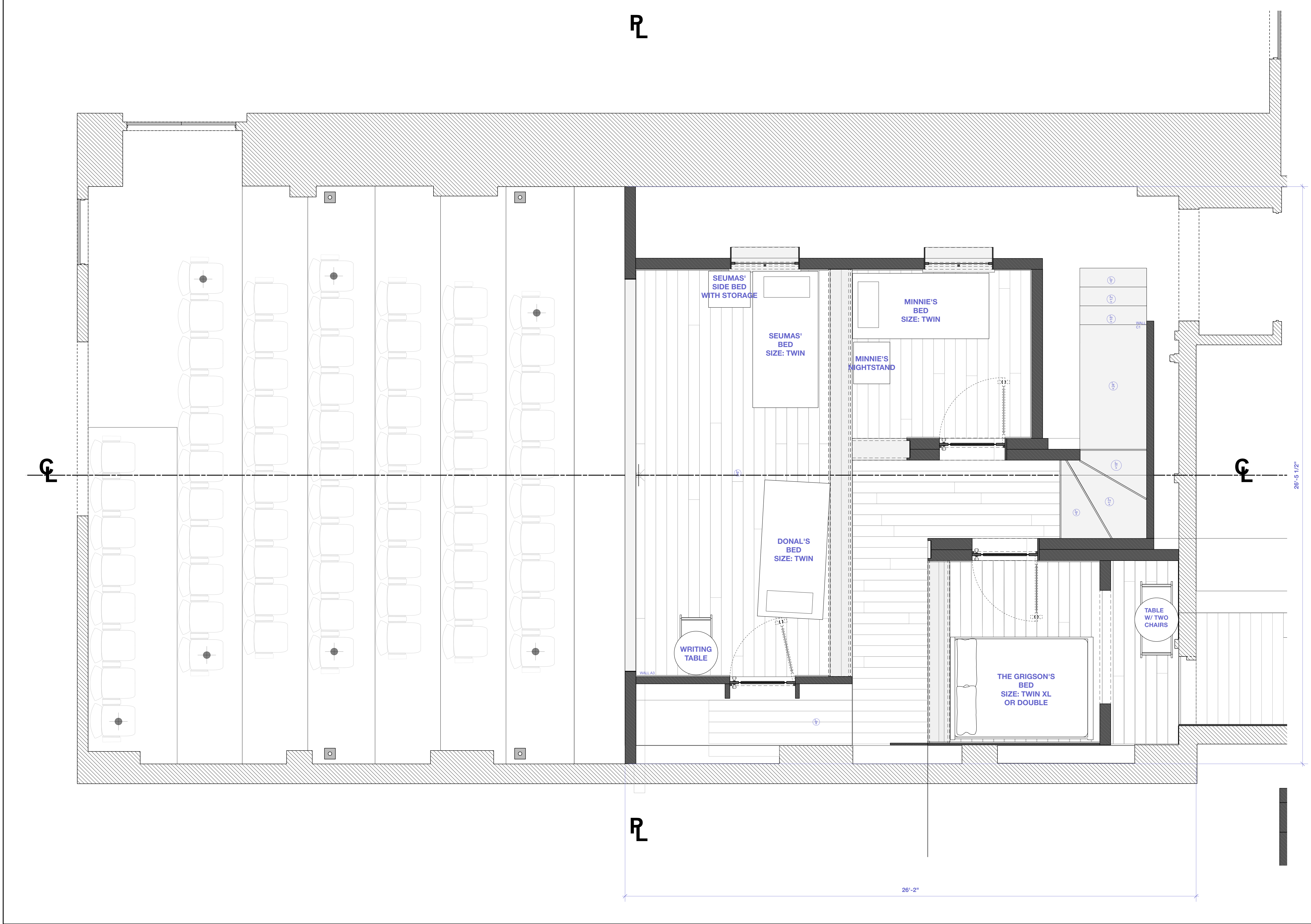
TISCH THIRD YEAR
PRODUCTION
SHUBERT THEATER
721 BROADWAY, NEW YORK, NY

DECK PLAN

DATE: 3 OCTOBER 2022

SCALE: 1/2" = 1'-0"

PLATE NO.
04
OF 11



DISCLAIMER
THIS DRAWING REPRESENTS VISUAL
CONCEPTS AND SUGGESTIONS FOR
CONSTRUCTION ONLY. THE
DESIGNER IS UNQUALIFIED TO
DETERMINE THE
ELECTRICAL OR STRUCTURAL
APPROPRIATENESS OF THIS
DESIGN
AND WILL NOT ASSUME
RESPONSIBILITY
FOR IMPROPER ENGINEERING,
CONSTRUCTION, OR USE.

REVISIONS		
#	REVISION	DATE
4		
3		
2	FINAL	10.3.22
1	PRELIMINARY	9.21.22

NOTES

THE SHADOW OF A GUNMAN

WRITTEN BY:
SEAN O'CASEY

DIRECTED BY:
IAN BELKNAP

SCENIC DESIGN BY:
JOSH OBERLANDER

TECHNICAL DIRECTOR:
JON ALLAIRE

TISCH THIRD YEAR
PRODUCTION
SHUBERT THEATER
721 BROADWAY, NEW YORK, NY

FURNITURE PLOT

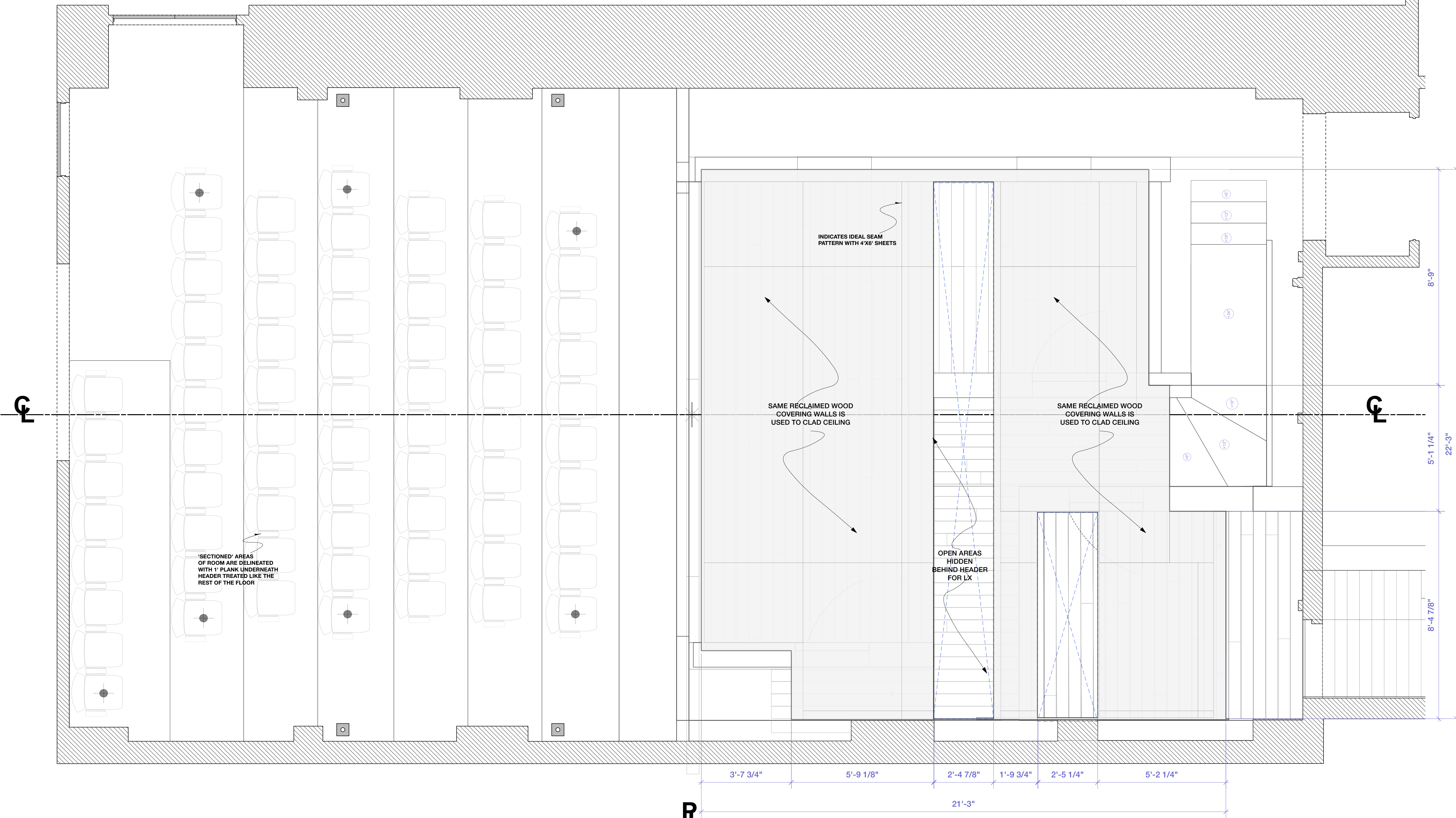
DATE: 3 OCTOBER 2022

SCALE: 1/2" = 1'-0"

PLATE NO.
05
OF 11

RL

RL



DISCLAIMER
THIS DRAWING REPRESENTS VISUAL
CONCEPTS AND SUGGESTIONS FOR
CONSTRUCTION ONLY. THE
DESIGNER IS UNQUALIFIED TO
DETERMINE THE
ELECTRICAL OR STRUCTURAL
APPROPRIATENESS OF THIS
DESIGN
AND WILL NOT ASSUME
RESPONSIBILITY
FOR IMPROPER ENGINEERING,
CONSTRUCTION, OR USE.

REVISIONS		
#	REVISION	DATE
4		
3		
2	FINAL	10.3.22
1	PRELIMINARY	9.21.22

NOTES

**THE SHADOW
OF A GUNMAN**

WRITTEN BY:
SEAN O'CASEY

DIRECTED BY:
IAN BELKNAP

SCENIC DESIGN BY:
JOSH OBERLANDER

TECHNICAL DIRECTOR:
JON ALLAIRE

TISCH THIRD YEAR
PRODUCTION
SHUBERT THEATER
721 BROADWAY, NEW YORK, NY

**REFLECTED
CEILING PLAN**

DATE: 3 OCTOBER 2022

SCALE: 1/2" = 1'-0"

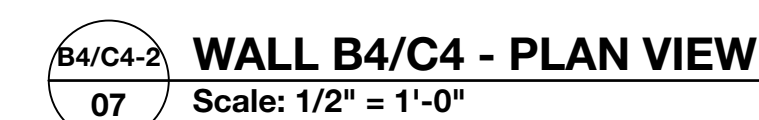
PLATE NO.
06
OF 11

LINES INDICATE IDEAL SEAM PATTERN.
SEAM PATTERN IS USED TO DELINEATE
ROOMS FROM ONE ANOTHER. 1" STRIPS CREATE BORDERS

HOME DEPOT WINDOW STOOL - PRE FAB
<https://www.homedepot.com/p/Alexandria-Moulding-1-3-4-in-x-7-1-2-in-x-84-in-Primed-Finger-Jointed-Pine-Wood-Window-Stool-Moulding-03413-93168C/205576599>

WALLS ARE CLADDED
WITH BACK SIDE OF
SALVAGED WOOD PANELLING

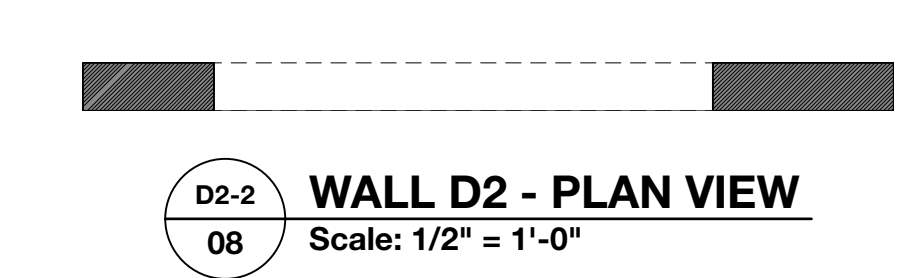
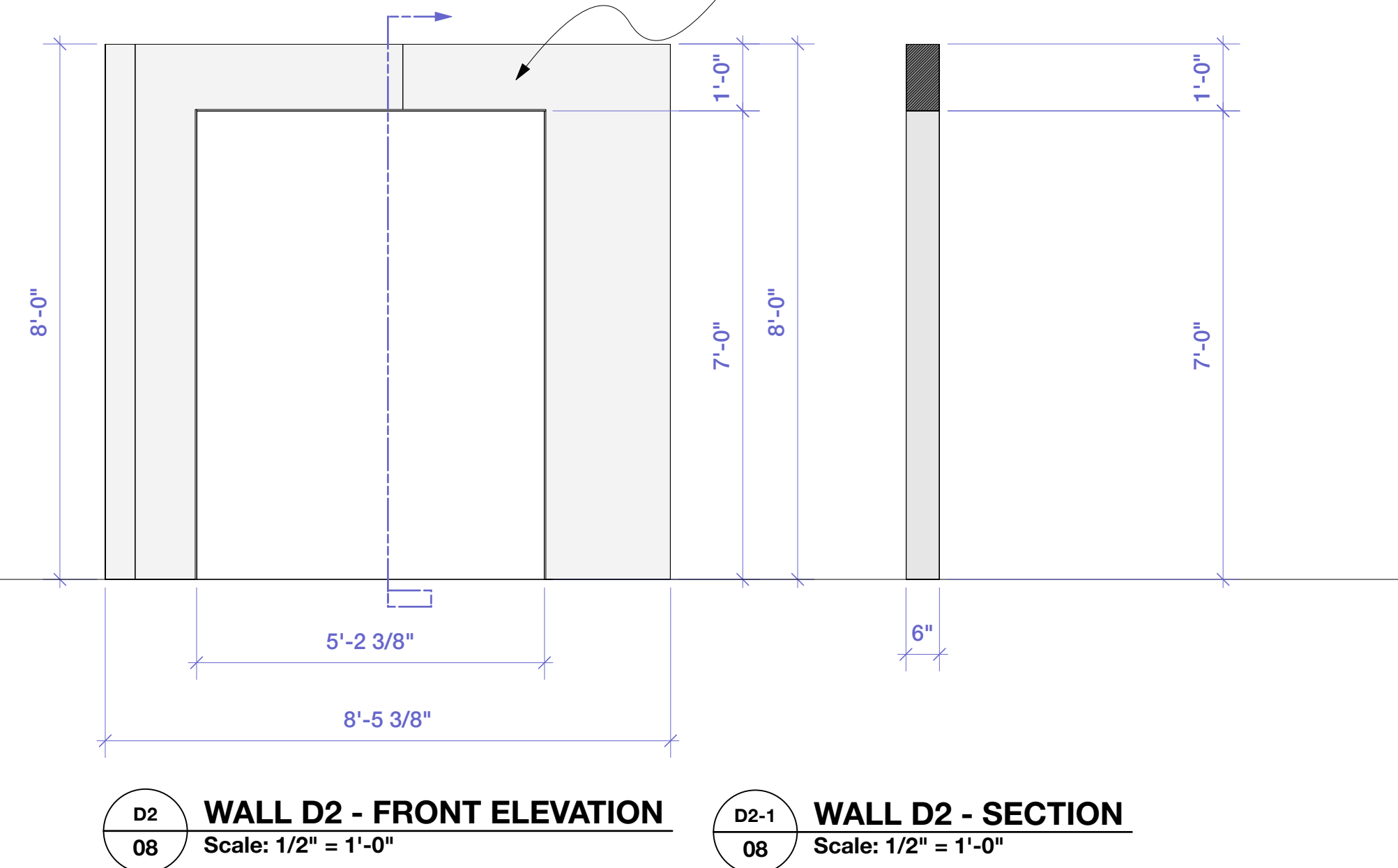
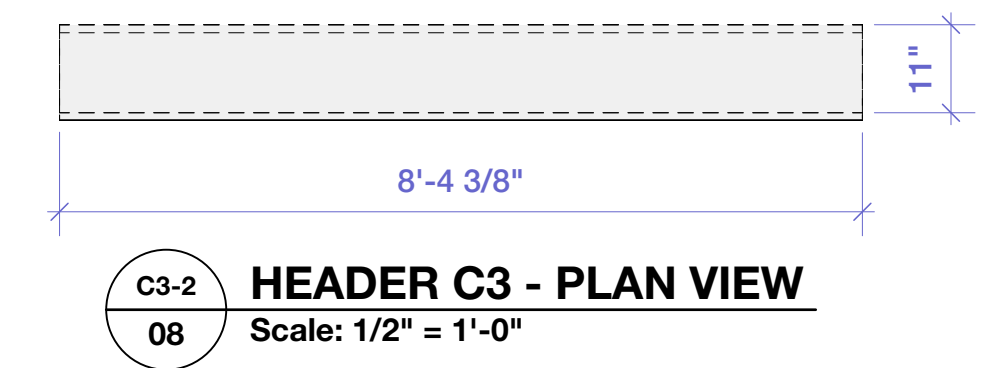
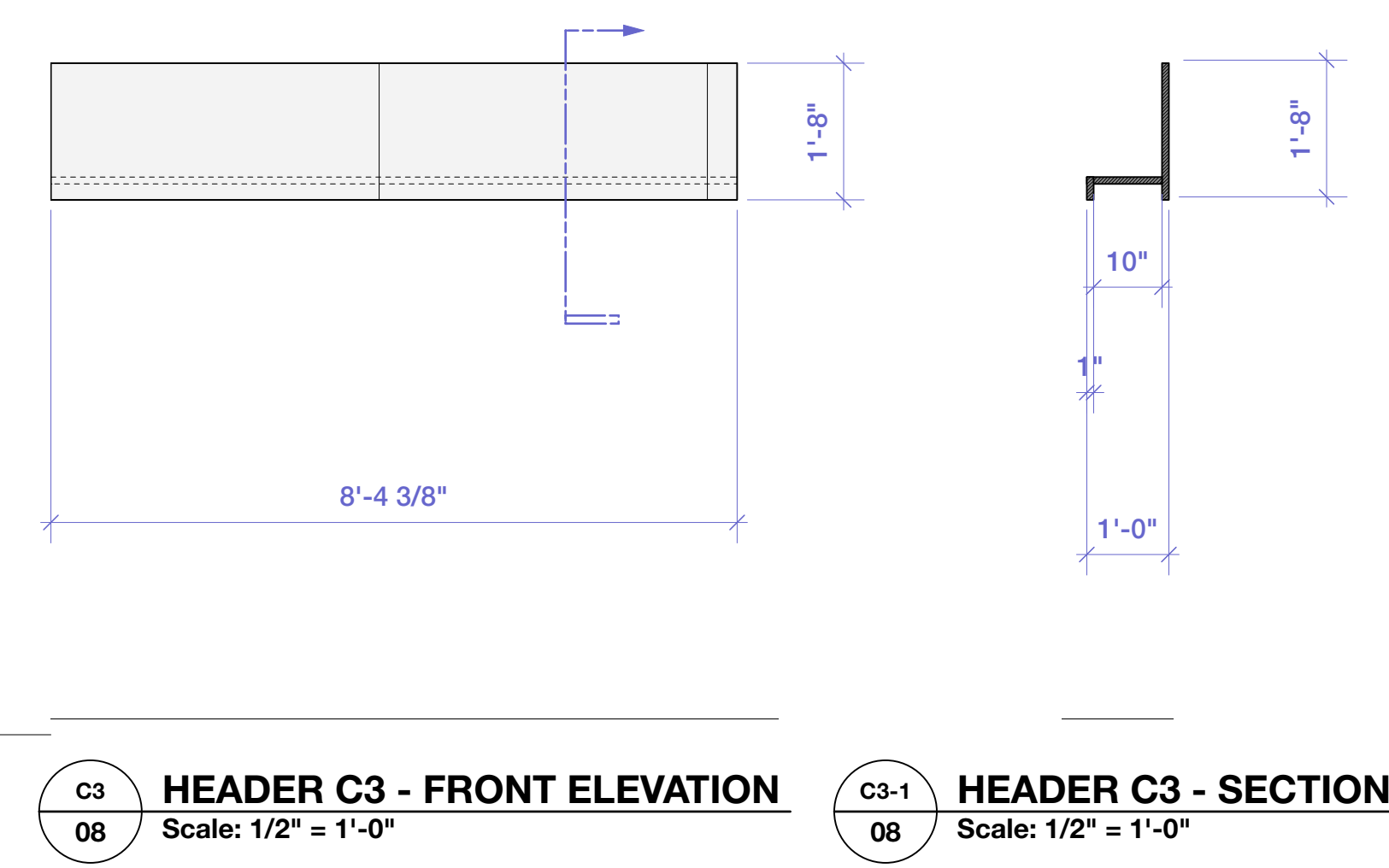
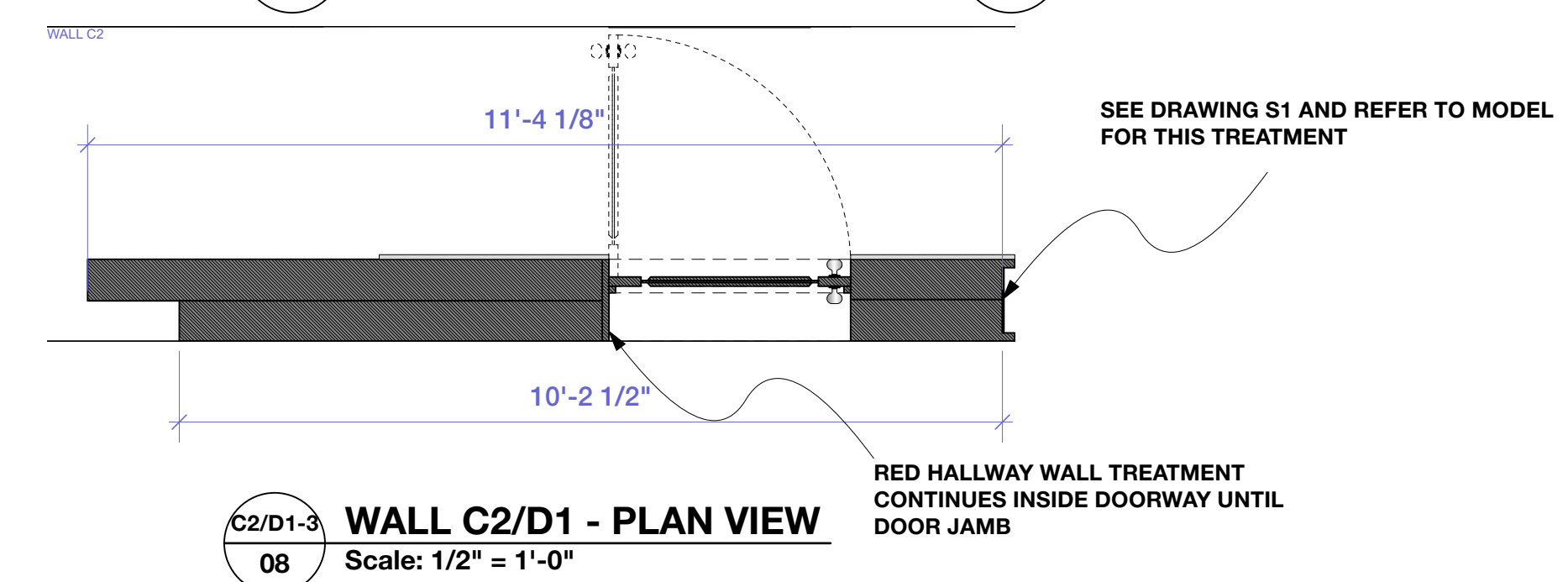
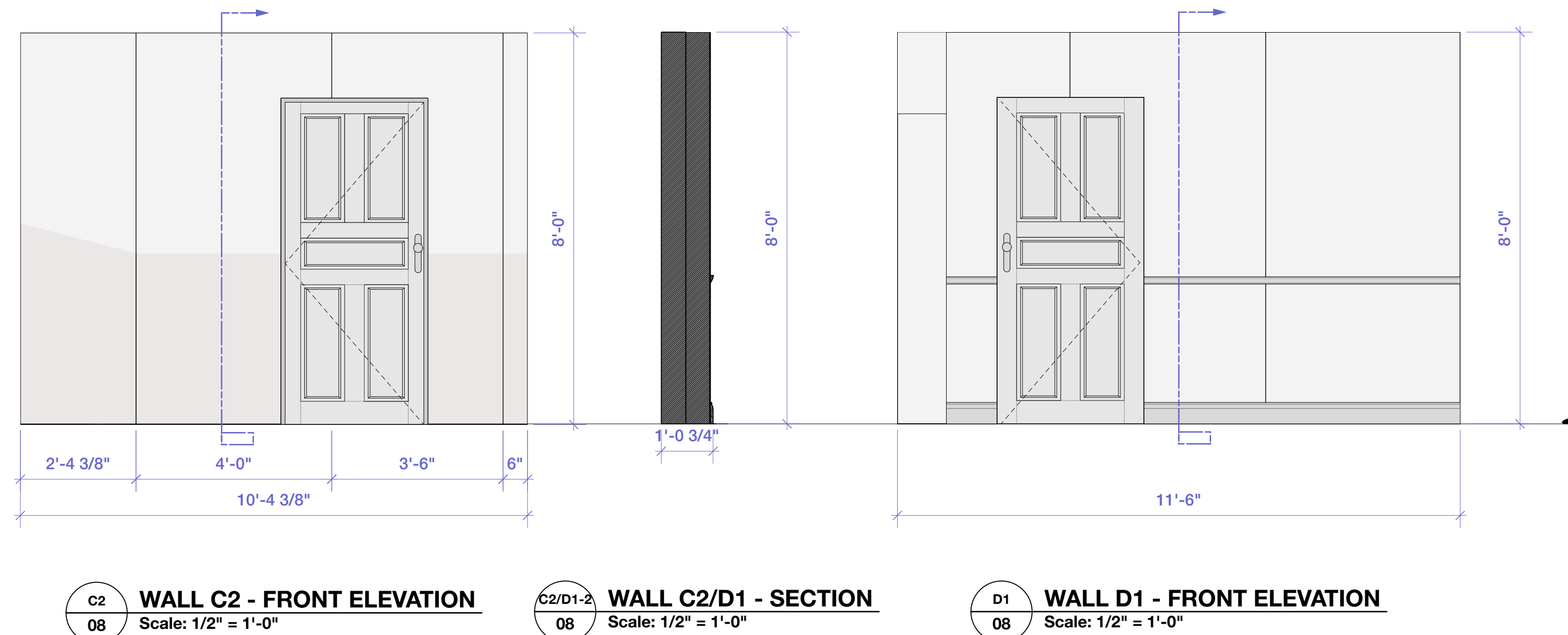
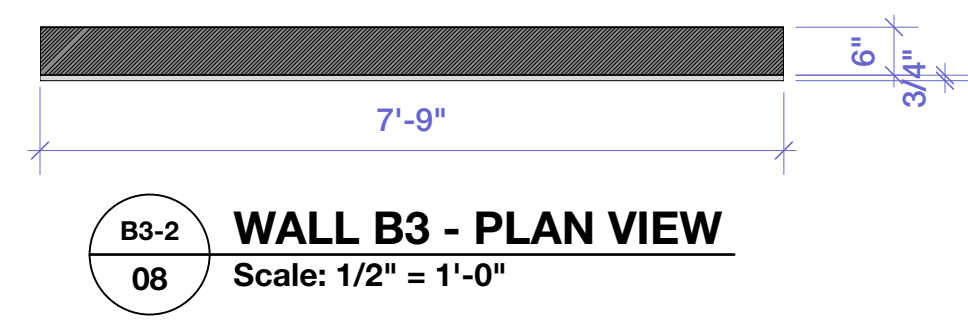
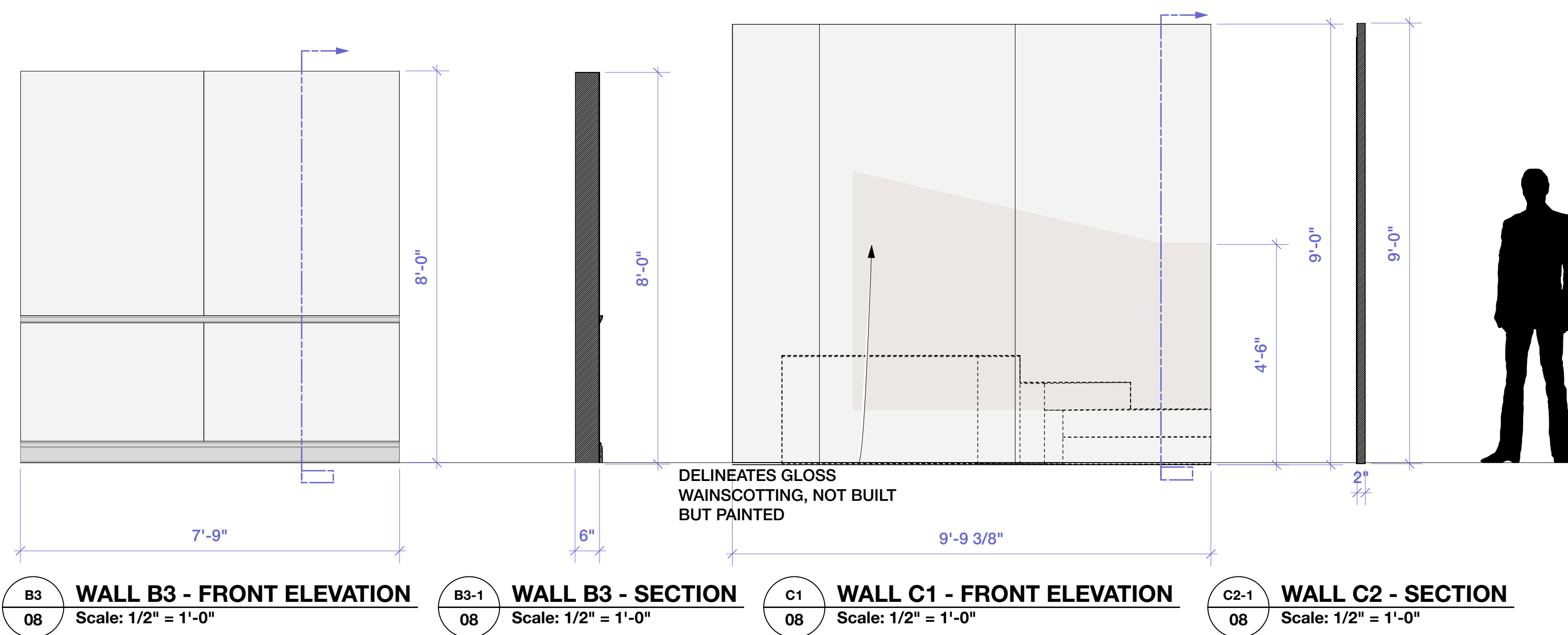
**DOORS SHOULD BE ALSO SALVAGED,
AND DIMENSIONS OF DOORFRAME CAN
SHIFT SLIGHTLY TO ACCOMMODATE THAT.**



NOTES

PLATE NO.

07
OF 11



DOOR FRAME/JAMB REF.
NOT TO SCALE

DISCLAIMER
THIS DRAWING REPRESENTS VISUAL
CONCEPTS AND SUGGESTIONS FOR
CONSTRUCTION ONLY. THE
DESIGNER IS UNQUALIFIED TO
DETERMINE THE
ELECTRICAL OR STRUCTURAL
APPROPRIATENESS OF THIS
DESIGN
AND WILL NOT ASSUME
RESPONSIBILITY
FOR IMPROPER ENGINEERING,
CONSTRUCTION, OR USE.

REVISIONS		
#	REVISION	DATE
4		
3		
2	FINAL	10.3.22
1	PRELIMINARY	9.21.22

NOTES

THE SHADOW OF A GUNMAN

WRITTEN BY:
SEAN O'CASEY

DIRECTED BY:
IAN BELKNAP

SCENIC DESIGN BY:
JOSH OBERLANDER

TECHNICAL DIRECTOR:
JON ALLAIRE

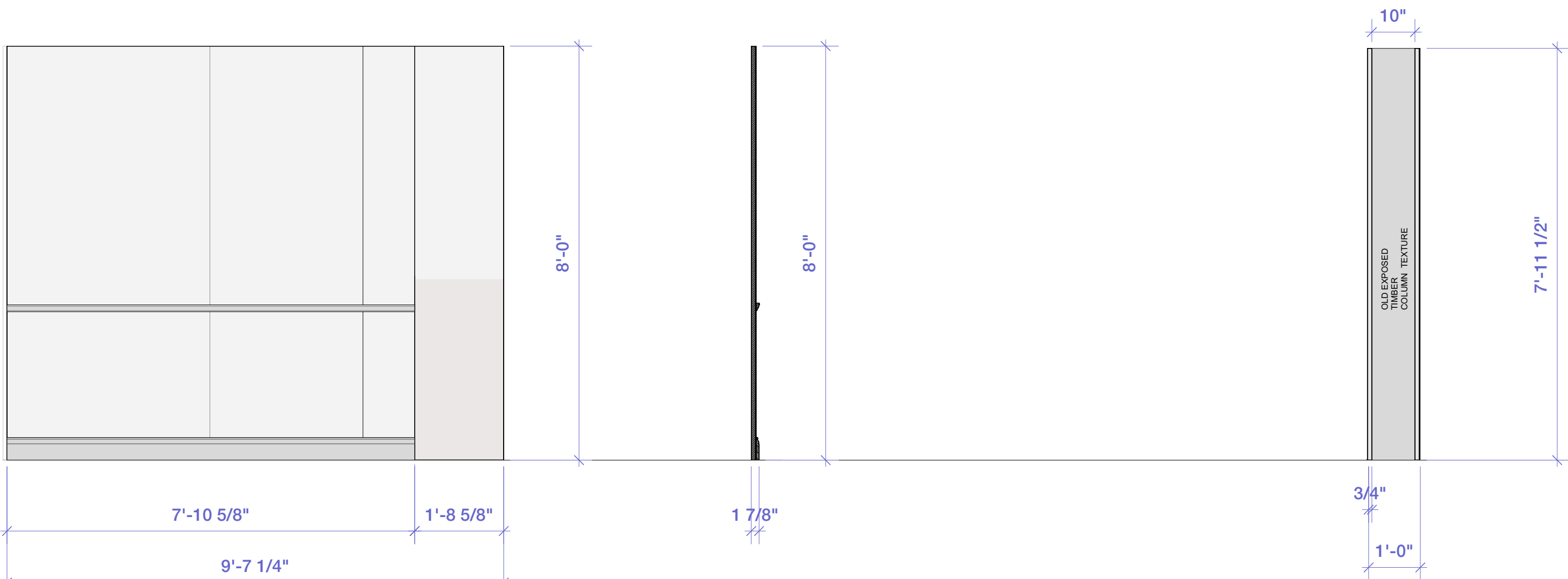
TISCH THIRD YEAR
PRODUCTION
SHUBERT THEATER
721 BROADWAY, NEW YORK, NY

ELEVATIONS
2 OF 4

DATE: 3 OCTOBER 2022

SCALE: 1/2" = 1'-0"

PLATE NO.
08
OF 11



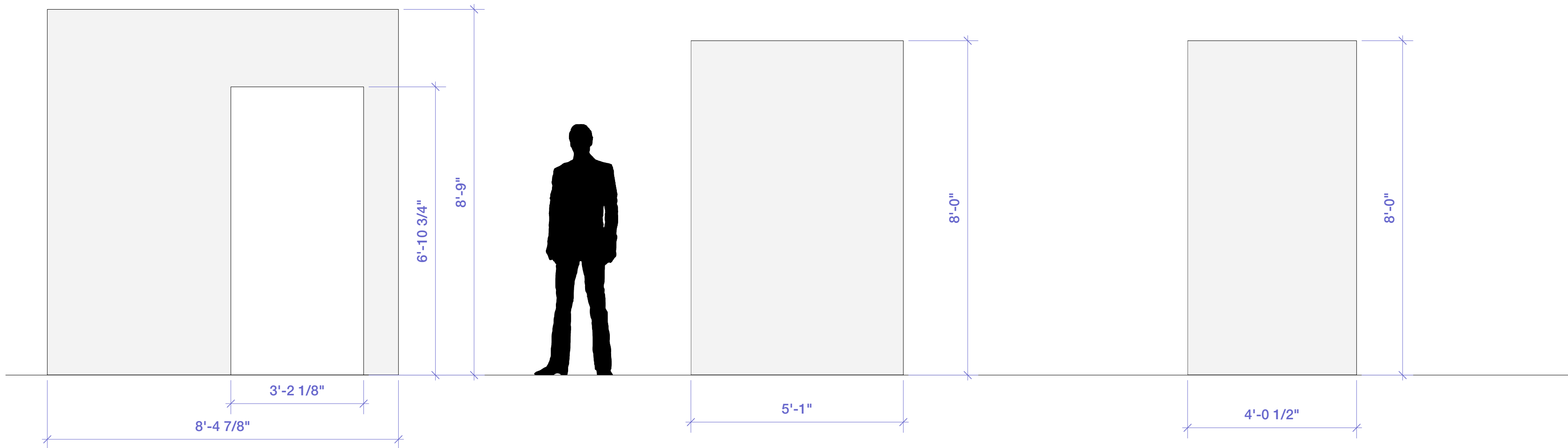
WALL D3 - FRONT ELEVATION
Scale: 1/2" = 1'-0"

WALL D3 - SECTION
Scale: 1/2" = 1'-0"

'SECTIONED WALL' DETAIL - FRONT ELEVATION
Scale: 1/2" = 1'-0"

WALL D3 - PLAN VIEW
Scale: 1/2" = 1'-0"

SECTION WALL - PLAN VIEW (DETAIL)
Scale: 1 1/2" = 1'-0"



WALLPAPER APPLIQUE D4 - FRONT ELEVATION
Scale: 1/2" = 1'-0"

WALLPAPER APPLIQUE D4 - FRONT ELEVATION
Scale: 1/2" = 1'-0"

WALLPAPER APPLIQUE D6 - FRONT ELEVATION
Scale: 1/2" = 1'-0"



HOME DEPOT VINYL WALL COVERING SPEC:
<https://www.homedepot.com/p/Norwall-Small-Rose-Stripe-Vinyl-Roll-Wallpaper-Covers-56-sq-ft-CN24640/303046034>

UPCYCLED 1930'S WALLPAPER SPEC:
<https://hannahstreasures.com/collections/1930s-floral/products/1930s-floral-vintage-wallpaper-vs112a>

WALLPAPER RESEARCH AND SPEC
Scale: N/A



GEORGIAN PANELLED DOOR REF.
NOT TO SCALE

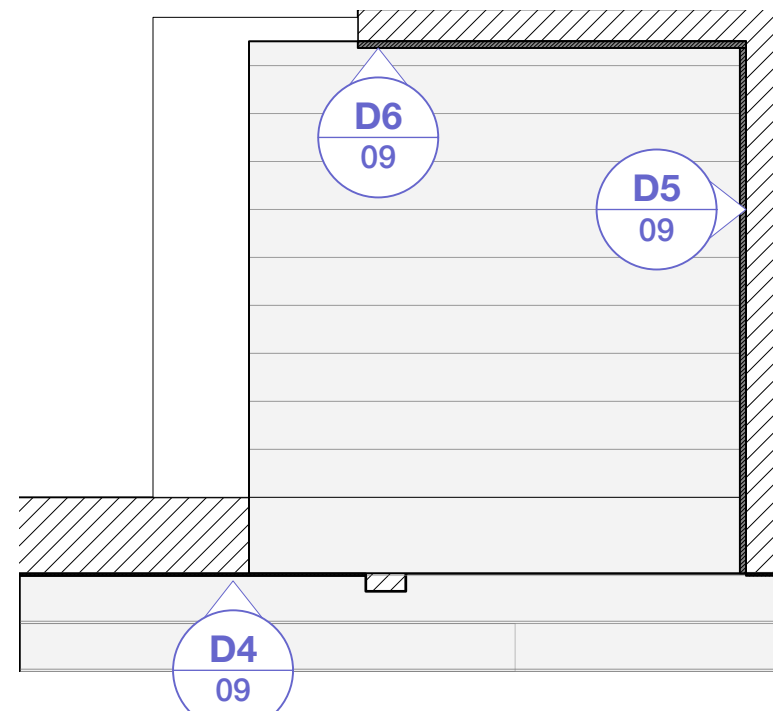
Two Solid Massive Pine Parlor Doors, w/Antique Doorknobs - \$380 (Part Green)



You'll have a hard time finding solid pine doors this tall! These are gorgeous old parlor doors. One has been painted a horrendous purple on one side and pink on the other. It measures 89 7/8 x 39 inches, w/two antique doorknobs. One has been cut down but can be built up again easily. It is painted white and is 64 1/2 x 29 inches. One antique door knob. Price is for both doors. Purple door only \$230. White door only \$125. SCAMMERS: This is a local, cash-only transaction. I do not test.



SALVAGED PANELLED DOOR SPEC
NOT TO SCALE



WALLPAPERED AREA - PLAN VIEW
Scale: 1/2" = 1'-0"

DISCLAIMER

THIS DRAWING REPRESENTS VISUAL CONCEPTS AND SUGGESTIONS FOR CONSTRUCTION ONLY. THE DESIGNER IS UNQUALIFIED TO DETERMINE THE ELECTRICAL OR STRUCTURAL APPROPRIATENESS OF THIS DESIGN AND WILL NOT ASSUME RESPONSIBILITY FOR IMPROPER ENGINEERING, CONSTRUCTION, OR USE.

REVISIONS

#	REVISION	DATE
4		
3		
2	FINAL	10.3.22
1	PRELIMINARY	9.21.22

NOTES

THE SHADOW OF A GUNMAN

WRITTEN BY:
SEAN O'CASEY

DIRECTED BY:
IAN BELKNAP

SCENIC DESIGN BY:
JOSH OBERLANDER

TECHNICAL DIRECTOR:
JON ALLAIRE

TISCH THIRD YEAR
PRODUCTION
SHUBERT THEATER
721 BROADWAY, NEW YORK, NY

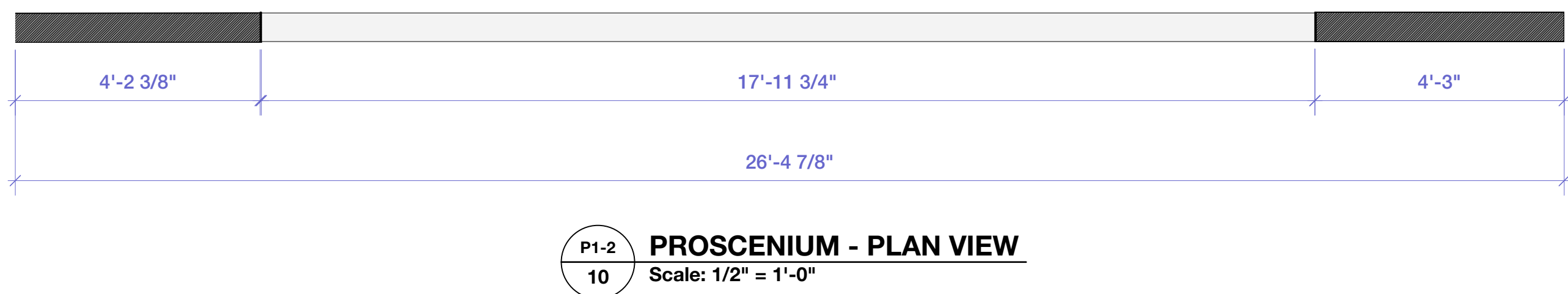
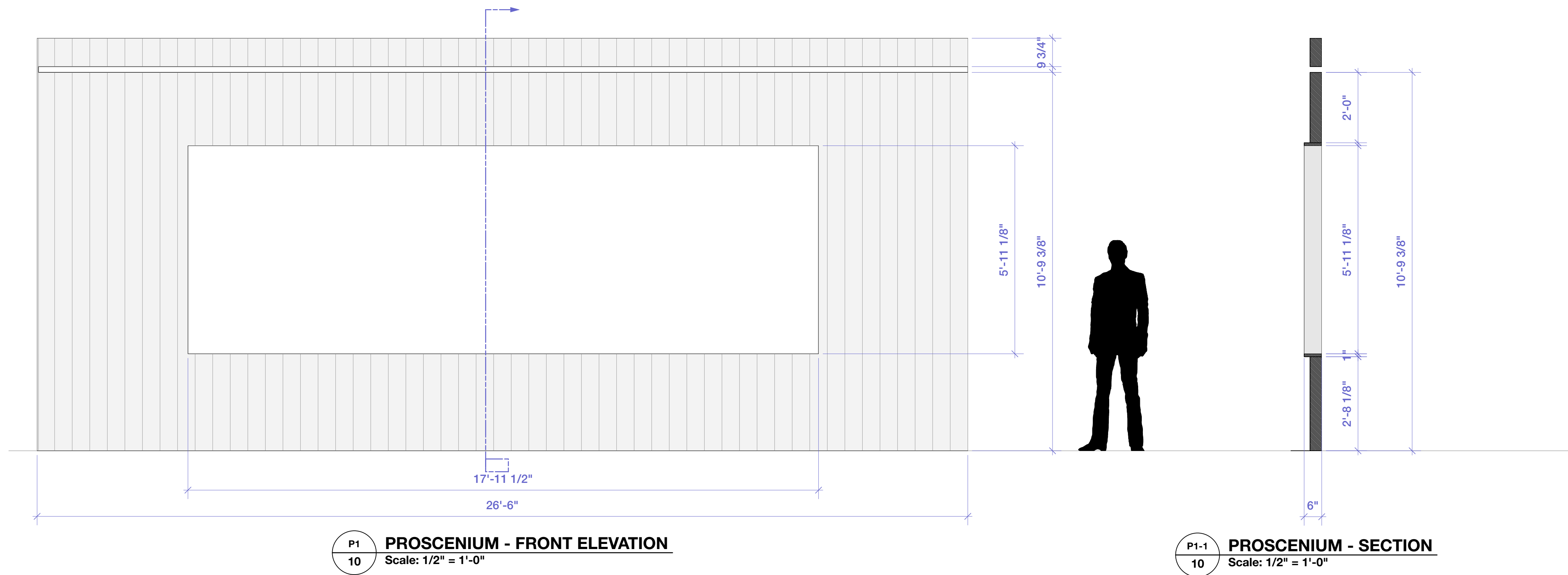
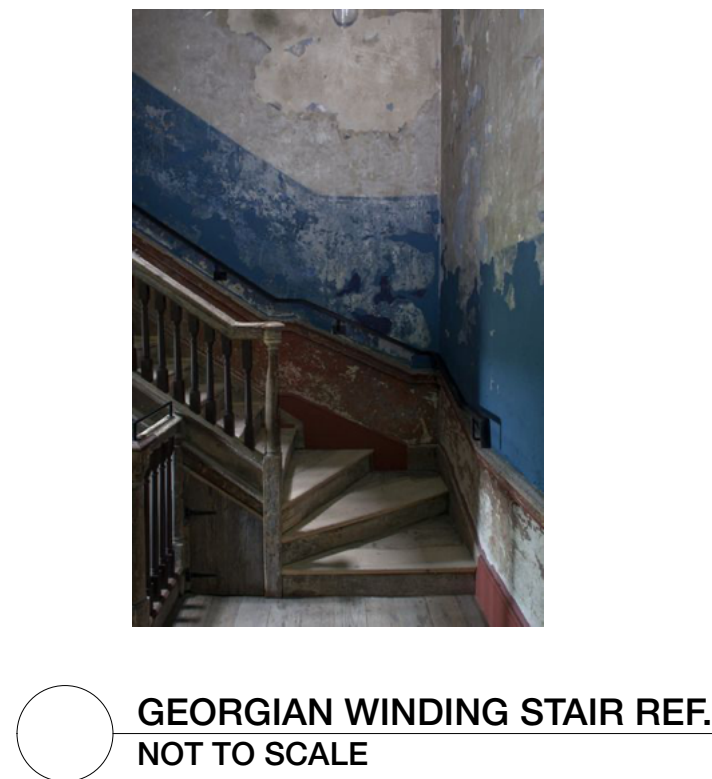
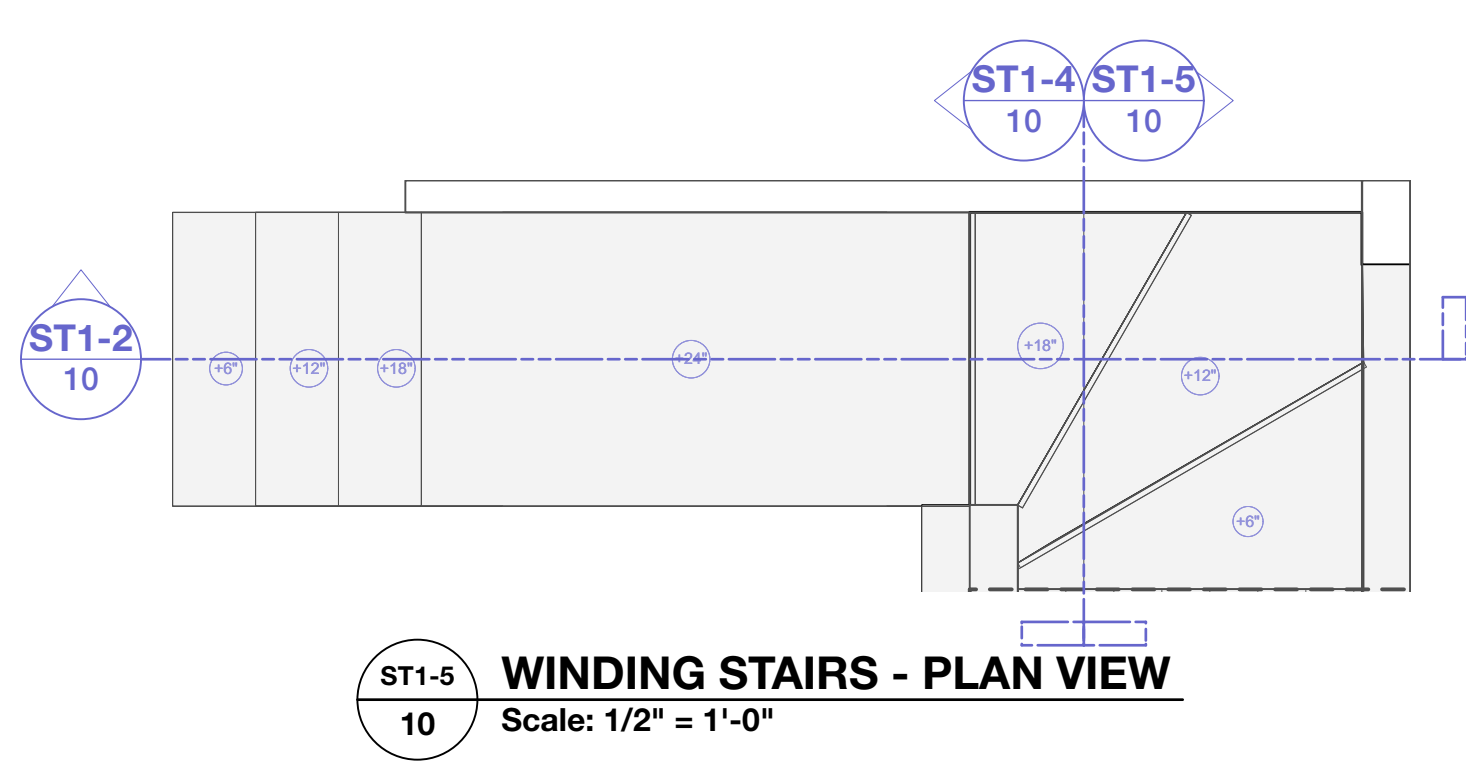
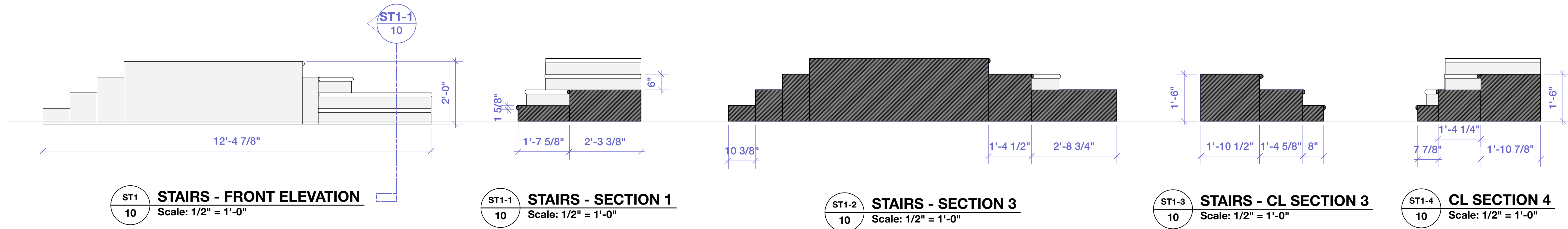
ELEVATIONS
3 OF 4

DATE: 3 OCTOBER 2022

SCALE AS WRITTEN

PLATE NO.

09
OF 11



DISCLAIMER
THIS DRAWING REPRESENTS VISUAL CONCEPTS AND SUGGESTIONS FOR CONSTRUCTION ONLY. THE DESIGNER IS UNQUALIFIED TO DETERMINE THE ELECTRICAL OR STRUCTURAL APPROPRIATENESS OF THIS DESIGN AND WILL NOT ASSUME RESPONSIBILITY FOR IMPROPER ENGINEERING, CONSTRUCTION, OR USE.

REVISIONS		
#	REVISION	DATE
4		
3		
2	FINAL	10.3.22
1	PRELIMINARY	9.21.22

NOTES

THE SHADOW OF A GUNMAN

WRITTEN BY:
SEAN O'CASEY

DIRECTED BY:
IAN BELKNAP

SCENIC DESIGN BY:
JOSH OBERLANDER

TECHNICAL DIRECTOR:
JON ALLAIRE

TISCH THIRD YEAR
PRODUCTION
SHUBERT THEATER
721 BROADWAY, NEW YORK, NY

ELEVATIONS
4 OF 4

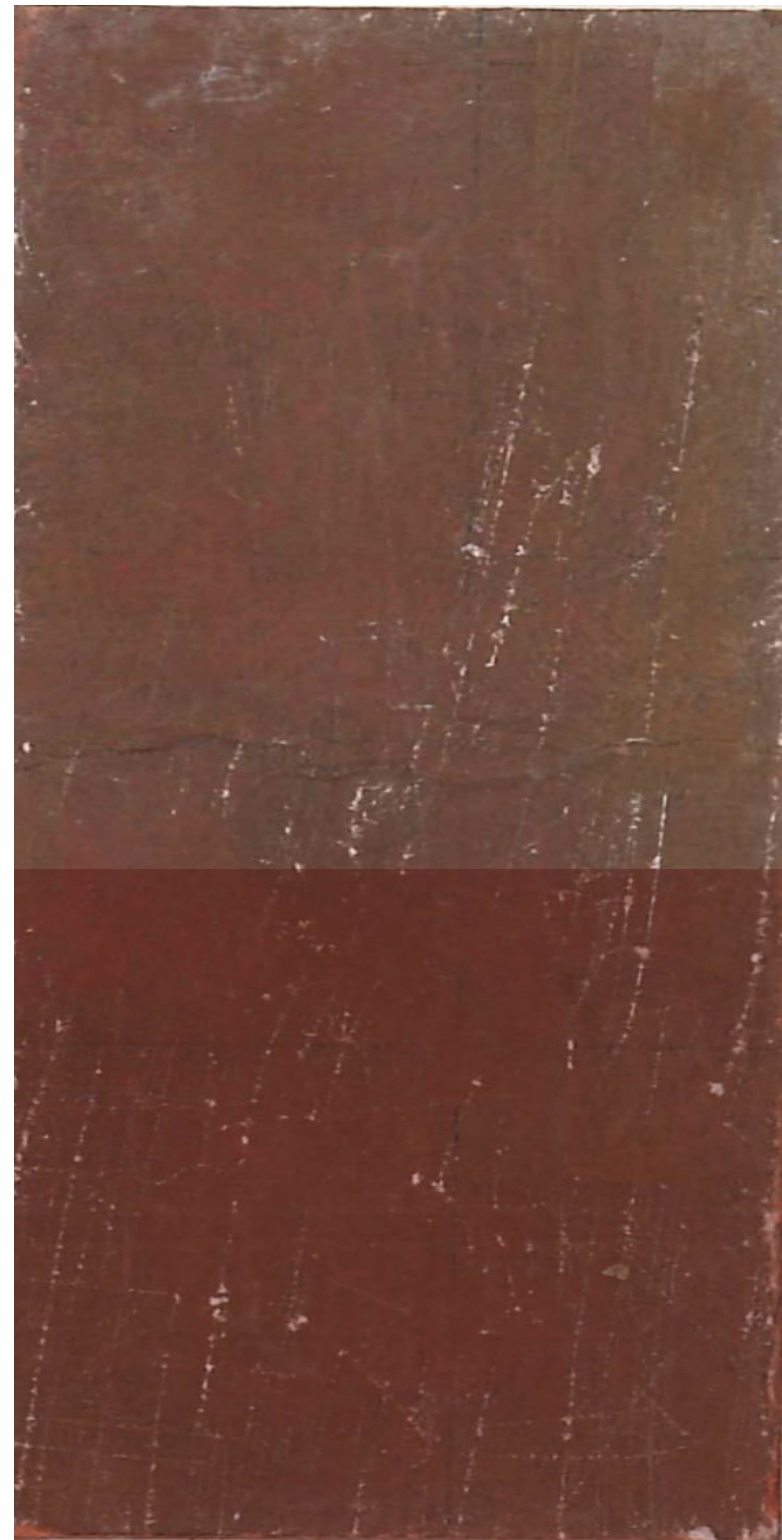
DATE: 3 OCTOBER 2022

SCALE: 1/2" = 1'-0"

PLATE NO.
10
OF 11

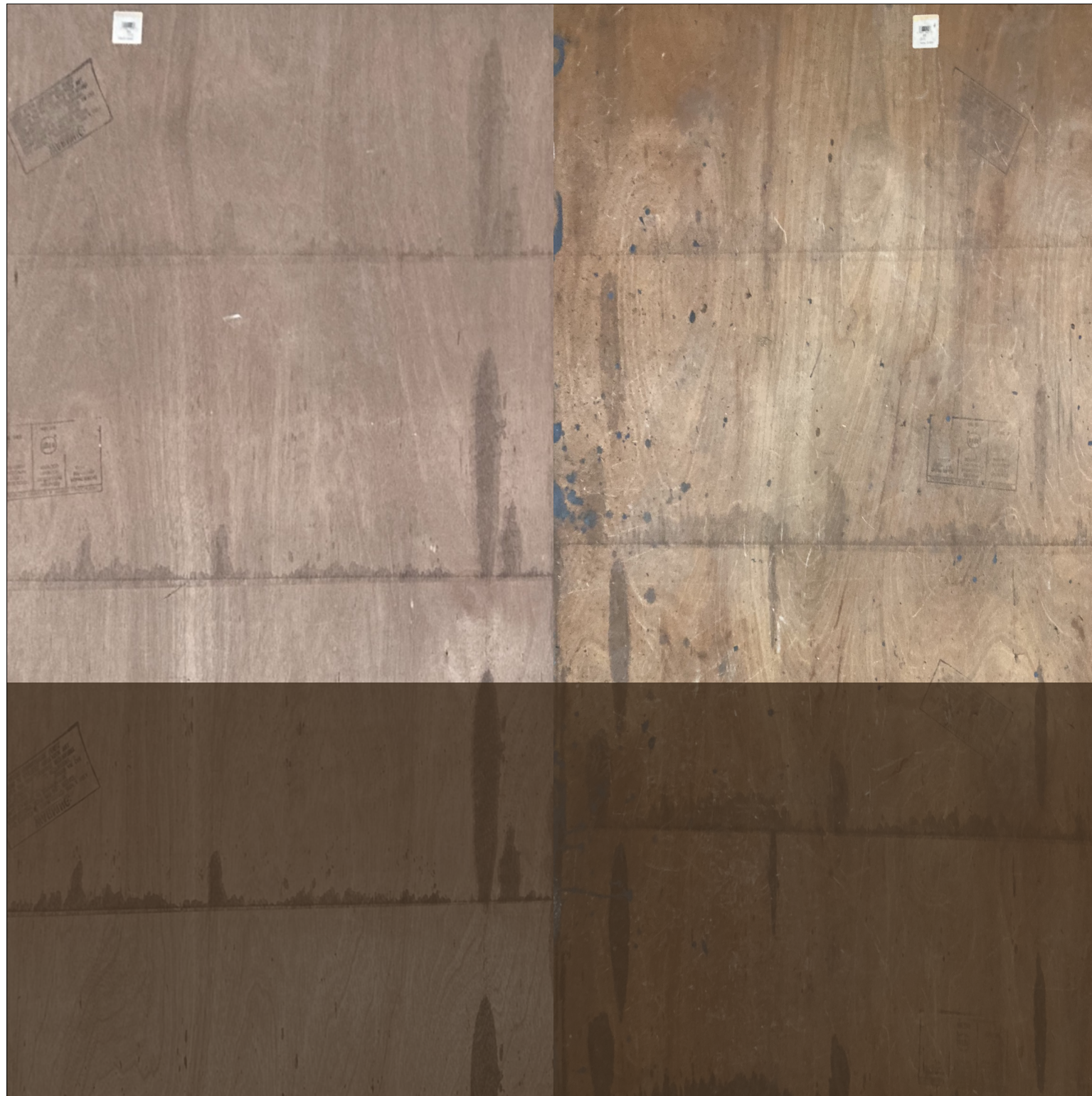


RED DISTRESSED WALL REFERENCE
NOT TO SCALE



1
11 HALLWAY WALL - PAINT TREATMENT
Scale: 1" = 1'-0"

RED WALL IS WOOD
SUBSTRATE WITH
BURNT SIENNA AND
MAROON WASHES,
DISTRESSED.
WAINSCOTTING IS
JUST A GLOSS POLY
APPLIED OVER.



2
11 BARE WOOD WALL TREATMENT
Scale: 1" = 1'-0"

THE BARE WOOD TREATMENT
IS RECLAIMED WOOD THAT'S
BEEN CHOSEN FOR ITS
VARIATIONS IN TONE,
NATURAL DISTRESSING,
SENSE OF HISTORY, AND
UNPREDICTABILITY. THE
VARIED PIECES ARE TIED
TOGETHER WITH A BURNT UMBER
STAIN 'WAINSCOTTING' BASED
ON RESEARCH.



RECLAIMED WOOD SPEC.
NOT TO SCALE

DISCLAIMER
THIS DRAWING REPRESENTS VISUAL
CONCEPTS AND SUGGESTIONS FOR
CONSTRUCTION ONLY. THE
DESIGNER IS UNQUALIFIED TO
DETERMINE THE
ELECTRICAL OR STRUCTURAL
APPROPRIATENESS OF THIS
DESIGN
AND WILL NOT ASSUME
RESPONSIBILITY
FOR IMPROPER ENGINEERING,
CONSTRUCTION, OR USE.

REVISIONS		
#	REVISION	DATE
4		
3		
2	FINAL	10.3.22
1	PRELIMINARY	9.21.22

NOTES		

THE SHADOW OF A GUNMAN

WRITTEN BY:
SEAN O'CASEY

DIRECTED BY:
IAN BELKNAP

SCENIC DESIGN BY:
JOSH OBERLANDER

TECHNICAL DIRECTOR:
JON ALLAIRE

TISCH THIRD YEAR
PRODUCTION
SHUBERT THEATER
721 BROADWAY, NEW YORK, NY

PAINT DETAILS

DATE: 3 OCTOBER 2022

SCALE: 1/2" = 1'-0"

PLATE NO.
11
OF 11